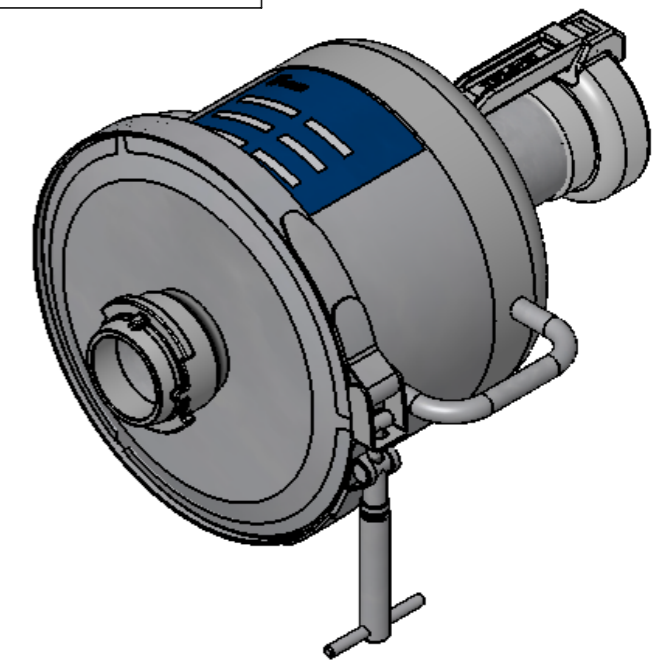
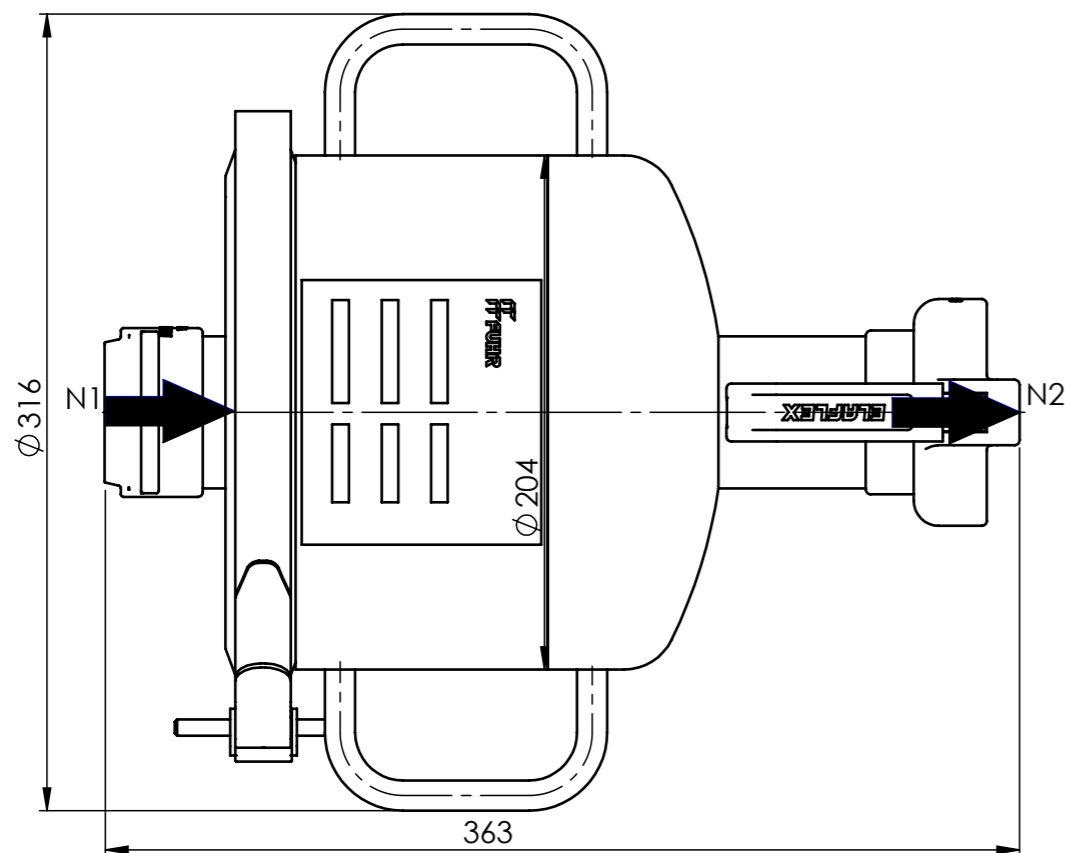
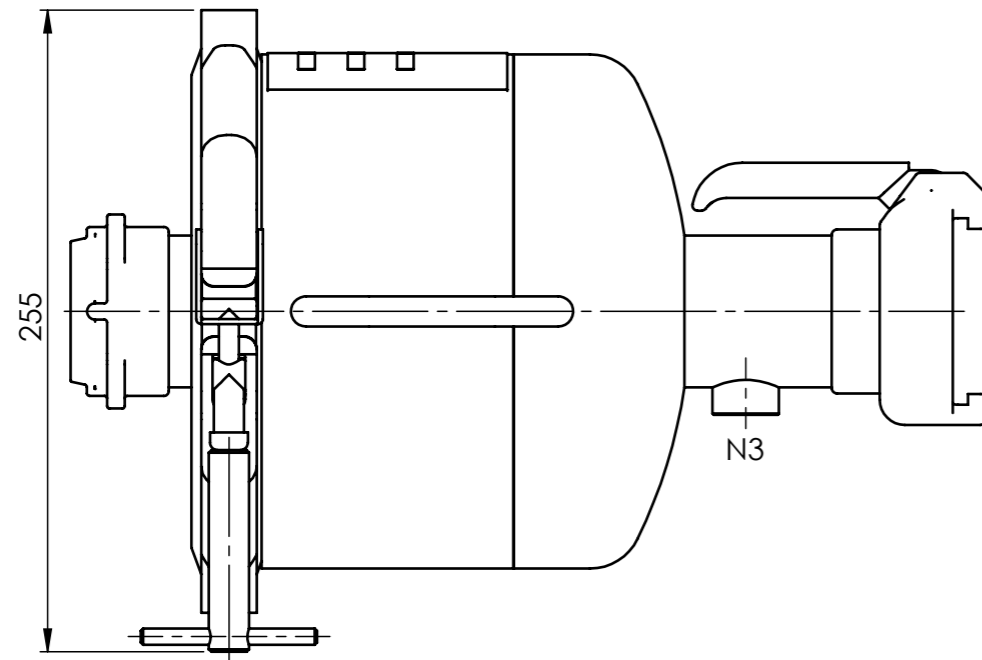



## STUTZENPLAN / NOZZLE INDEX

| Anschluss / Connection | Größe / Size | Typ / Type         | DIN       |
|------------------------|--------------|--------------------|-----------|
| N1                     | DN50-VT      | Eingang / Inlet    | DIN 28450 |
| N2                     | DN50-MT      | Ausgang / Outlet   | DIN 28450 |
| N3                     | Rp1/2"       | Entleerung / Drain | DIN 2986  |

## SPEZIFIKATION / SPECIFICATION

|  |   |
|--|---|
| Max. zul. Druck / Max. allow. Pressure         | 10 bar  |
| Prüfdruck / Test Pressure                      | 14,3 bar                                      |
| Max. zul. Temperatur / Max. allow. Temperature | -10/+80°C                                     |
| Inhalt / Volume                                | ~ 7 l   |
| Werkstoff Gehäuse / Material Housing           | 1.4301  |
| Werkstoff Dichtung / Material Gasket           | TC-Profilichtung FPM<br>TC-profile gasket FPM |
| Werkstoff Clampverschluss / Material Clamp     | Edelstahl /<br>Stainless Steel                |
| Gewicht / Weight                               | ~ 12 kg                                       |



|   |              |          |                               |
|---|--------------|----------|-------------------------------|
|   | Datum / date | Name     | Typ / type                    |
|   | 18.05.2015   | Neubauer | F-SF-10/TW50-A2               |
| Bearb.  |              |          |                               |
| Gep.  |              |          |                               |
| Norm  |              |          |                               |
|  |              |          | Artikel-Nr. / article-no.     |
| Am Weinkastell 14<br>55270 Klein-Winternheim  |              |          | 5500672050                    |
| zugeh. Zeichnung / acc. drawing: A-1238 Rev.0   |              |          | Ersatz für / replacement for: |